



MASTerview WINDOWS

BY KAS KEL

NEW CONSTRUCTION SERIES

HIGH PERFORMANCE, LOW MAINTENANCE.

A Natural Fit.



ECOLOGY

- Low Energy Consumption
- Smaller Carbon Footprint
- Durable, Sustainable Materials



ECONOMY

- Lower Energy Bills
- Low Ownership Cost
- Best-of-Class Warranty



COMFORT

- Low Air Infiltration
- High-Tech UV Protection
- Outstanding Sound Reduction





The MasterView Windows Story

MasterView Windows are designed to live in harmony with your world.

The high-efficiency design cuts energy costs dramatically. The low-maintenance construction fits well with busy lifestyles. And with a best of class warranty, MasterView Windows are guaranteed to work beautifully for years.

Ecology. Economy.

MasterView Windows offer the best of both worlds, with a durable, high-performance design that meets or exceeds all Energy Star standards.

Ultra-High Performance

Our optional Energy Star U-4 and Energy Star III Glazing Packages meets or exceeds all current Energy Star standards. It can lower the average home energy bill by 30 to 40 percent, and cut CO₂ output by 1,600 pounds per year*.

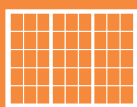
A Natural Fit

MasterView New Construction Windows offer a wide array of styles and casings to accommodate almost any design. Exceptional fit and finish, along with outstanding thermal performance have made them a popular choice among quality builders and homeowners, and they're backed by the best warranty in the industry.

* Courtesy Truseal Technologies



Casement



Patio Door



Half Round



Bay / Bow



Double Hung



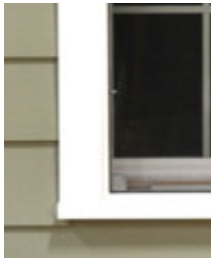
Rolling



Specialty Shape



Brickmold Trim



3 1/2" Vinyl Trim



The 100 Series Single Hung and 300 Series Double Hung feature an integrated brickmold trim package or a 3 1/2" vinyl trim. Both also serve as a J-channel pocket, for a clean look and easy installation.

Standard Features

- Welded Sash and Frame
- Fiberglass Screens
- Reinforced Meeting Rail
- Sloped Sill with Interlocking Leg
- 100 SH: Bottom Sash Tilts In/Half Screen
- 300 DH: Both Sashes Tilt In/Full Screen
- 100 SH: Frame Depth 3"
- 300 DH: Frame Depth 3 5/8"
- Fully Weather-Stripped Interlock
- Also available in Rolling, Picture Window, and Specialty Shapes

Performance Options

- Energy Star U-4 and Energy Star III Glazing Packages
- Flat, Profile or SDL Grid Package
- DP 50 Upgrade for 100 SH and 300 DH
- Multiple Colors Available

Brickmold Series

100 Single Hung

300 Double Hung



NFRC Thermal Performance Data – 300

Glazing	U-Value	SHGC	VLT
Energy Star U-4	.24	.27	.49
Energy Star III	.27	.37	.52
Low E/Argon	.27	.28	.52
HP Low E	.31	.29	.52
Clear	.45	.63	.64



Our most popular new construction window, the 200 Series Double Hung combines high thermal efficiency with high-end features and an exceptionally solid design.

Standard Features

- Fusion Welded Sash and Frame
- Fully Weather-Stripped Interlock at Meeting Rail
- Unique Ogee Curve Masterframe
- Fiberglass Full Screen
- Sloped Sill with Interlocking Leg
- DP 35 Rating
- Both Sash Tilt in for Easy Cleaning
- Reinforced Meeting Rail
- Also available in Rolling, Picture Window, and Specialty Shapes
- 2 3/4" Frame Depth

Performance Options

- Energy Star U-4 and Energy Star III Glazing Packages
- Flat, Profile or SDL Grid Package
- Fiberglass Half Screen
- Multiple Colors Available
- DP 50 Upgrade

200 Double Hung



NFRC Thermal Performance Data – 200

Glazing	U-Value	SHGC	VLT
Energy Star U-4	.24	.27	.49
Energy Star III	.28	.38	.52
Low E/Argon	.28	.29	.52
HP Low E	.32	.29	.52
Clear	.46	.63	.65



200 DH Cambridge Casing



200 DH Ogee Curve



The unique design of the 200 DH allows maximum light and viewing area with a slimline frame engineered for rigidity. The standard ventilation latches and tilt-in sashes make it ideal for both single-family and multi-unit developments. With the optional Energy Star U-4 and Energy Star III glazing packages, the 200 Series meets or exceeds the most current Energy Star standards.



Standard ventilation latches provide added safety and security



Quick-release tilt-in sashes allow for easy cleaning



Integral J-channels deliver a weather-tight exterior seal



Engineered for exceptional strength and efficiency, the 400 offers the premium construction and features typically found in the most expensive lines.

Standard Features

- Thermal Fusion Welded Frame and Sash
- Sleek Slimline Sash Profile
- Quad Weather Stripping at Key Contact Points
- Also available in Rolling and Picture Window
- Full Length Lift Handles
- Full Screen
- Approved Forced Entry Locking System
- Sash Tilt In for Easy Cleaning
- Double Recessed Meeting Rail Locks
- DP 50 Rated
- Interlocking Sloped Sill
- Dual Ventilation Latches
- 3 1/4" Frame Depth

Performance Options

- Energy Star U-4 & DOE R5 Triple Glazing Packages
- Multiple Colors Available
- Flat, Profile or SDL Grid Package
- Impact Rated

400 Double Hung



NFRC Thermal Performance Data – 400

Glazing	U-Value	SHGC	VLT
DOE-R5	.20	.20	.36
Energy Star U-4	.24	.25	.44
Low E/Argon	.28	.26	.48
HP Low E	.31	.26	.48
Clear	.44	.57	.59





MasterView 700 Casement and Awning windows are engineered for easy operation and maximum ventilation. Multi-point locking provides added safety and security, and all models are available in single and multi-unit combinations.

Standard Features

- Fusion Welded Frame and Sash
- Multi-Point Locking System
- Double Weather Stripping Around Perimeter
- Sash Crank Out 90 Degrees
- Fiberglass Full Screen
- DP 50 Rated
- Also available in Awning and Picture Window
- Common Jamb - Multiple Units

Performance Options

- Energy Star U-4 and Energy Star III Glazing Packages
- Egress Hardware
- Multiple Colors Available
- Flat, Profile or SDL Grid Package
- Multi-Unit Factory Mullion Package

700 Casement/Awning



NFRC Thermal Performance Data – 700

Glazing	U-Value	SHGC	VLT
DOE-R5	.20	.19	.33
Energy Star U-4	.23	.23	.41
Energy Star III	.26	.32	.44
Low E/Argon	.26	.24	.44
HP Low E	.29	.24	.44
Clear	.44	.57	.59



The MasterView Bay/Bow series provides high-end elegance in a high-efficiency system. With its heavily insulated seat board and Energy Star Rated glazing option, MasterView Bays and Bows deliver outstanding thermal performance in a particularly vulnerable area of the home.

Standard Features

- All Welded Construction
- 1 1/2" Insulated Seat Board
- Red Oak or Birch Veneer Head and Seat Board
- Screens on Operating Vents
- 4 9/16" or 6 9/16" Jamb Depth
- Hanging Cable System
- Flexible Closure Fin
- Bay Available in DH or Casement Styles

Performance Options

- Energy Star Rated Glazing Packages
- Flat, Profile or SDL Grid Package
- Multiple Colors Available
- Custom Jamb Depths

Bay Window



Bow Window





MasterView Rolling Windows are built on precision-calibrated rollers for long life and smooth fingertip operation. Sash is easily removed for cleaning. Available in the 100, 200, 300 and 400 Series.

MasterView Hopper Windows feature premium construction and a wide range of custom sizes. All sashes tilt in from the bottom.

Standard Features

- Precision Calibrated Rollers
- Interlock at Meeting Rail
- Removable Sash for Easy Cleaning
- Fiberglass Half Screen
- Double Locks Over 28" Height

Performance Options

- Fiberglass Full Screen
- Energy Star Rated Glazing Packages
- Flat or Profile Grid Package
- SDL Grid Package
- Multiple Colors Available

Rolling Window



Hopper Window





The MasterView Windows Specialty Shapes allow for an unlimited range of architectural expressions without compromising energy efficiency. For building or remodeling, they open a new world of possibilities.

Standard Features

- Thermal Welded Forming Process
- Structural Welded Frame
- Super Heavy Wall for Strength and Rigidity

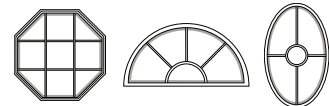
Performance Options

- Low-E Glass and Argon Fill
- Interior Trim Packages
- Exterior PVC Trim Packages
- Extension Jamb

Specialty Shape Options

- Circle Top
- Eyebrow
- Gothic/Half-Gothic
- Oval/Half-Oval
- Full Circle
- Ellipse
- Quarter Arch
- Transom
- Operating Octagon
- Custom Shapes

Specialty Shapes





The MasterView 3200 is one of the best built, best performing patio doors available at any price. It's reinforced at key points with heavy-duty aluminum, for a lifetime of trouble-free operation.

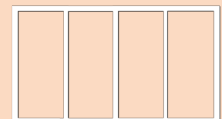
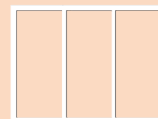
3200 Patio Door

Standard Features

- Sill Engineered for Excellent Drainage
- Integral Nail Fin and Screen Track
- Aluminum Screen Frame with Fiberglass Mesh Screening
- One Rolling and One Stationary Panel
- Interlocking Meeting Rail
- Adjustable Steel Rollers
- Dual Point Locking Hardware

Performance Options

- Energy Star Rated Glazing Package
- 5, 6, 8 Foot 2-Lite Styles
- 9, 12 Foot 3-Lite Styles
- 12 Foot 4-Lite Styles
- Field-Applied, Pre-Cut J-Channel
- Field-Applied, Pre-Cut Extension Jamb
- 4 9/16" or 6 9/16" Pre-Primed or Clear Extension Jamb
- Flat or Profile Grid Package
- Multiple Colors Available





MASTERVIEW WINDOWS

A Natural Fit

- Limited Lifetime Warranty
- Over Seven Decades of Manufacturing Experience
- Electronic Ordering System
- Field Service Team
- Architectural Support
- Marketing Services
- Extensive Delivery Fleet
- Energy Star Labeled
- NFRC Certified
- AAMA Certified Extrusions

A Cleaner, Greener World

MasterView Windows can reduce home energy use by 30 to 40 percent, and reduce CO₂ output by 1,600 pounds per year.* No window on Earth is better for the planet.

Designed for Living

MasterView Windows come in a wide range of styles to complement almost any architecture. They're low-maintenance, high-performance, easy to clean, and a natural fit with any living room or lifestyle.

Built for Life

High-grade hardware and high-impact components have earned MasterView Windows high marks for longevity. All MasterView Windows are backed by the strongest warranty in the industry.

Standard Color Options



*All representations of colors are mechanically reproduced and may vary from the actual product. Terms and conditions apply.

Non-Standard Color Options



Have a color in mind? We can custom match it!

MasterView Window Systems

60 School Street
Fonda, NY 12068
518.853.3421
MasterViewwindows.com

A Quality Product of Kasson Keller Inc.



* Courtesy Truseal Technologies